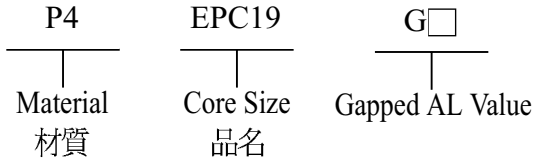


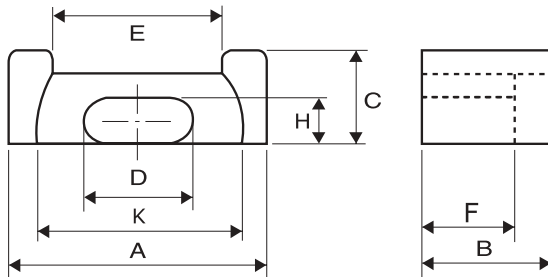
Type : EPC Cores

Ordering Code:

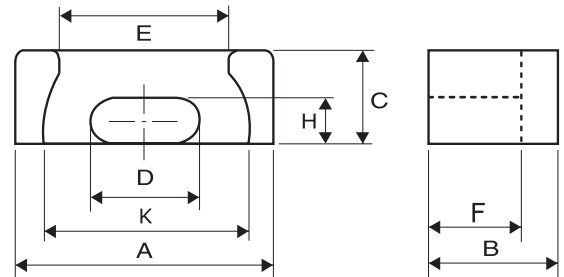


Shape:

Type:1



Type:2



DIMENSIONS

CORES	DIMENSIONS (mm)								
	A	B	C	D	E	F	H	K	TYPE
EPC10	10.20 ± 0.30	4.05 ± 0.15	3.40 ± 0.15	5.00 ± 0.10	5.30min	2.55min	1.90±0.10	7.60min	2
EPC12.6	12.40 ^{+0.40} / _{-0.00}	5.75 ^{+0.13} / _{-0.00}	3.60 ^{+0.00} / _{-0.25}	6.20 ^{+0.00} / _{-0.30}	7.32 ^{+0.30} / _{-0.00}	3.25 ^{+0.20} / _{-0.00}	2.30 ^{+0.00} / _{-0.18}	8.80 ^{+0.30} / _{-0.00}	2
EPC13	13.20 ± 0.25	6.60 ± 0.20	4.60 ± 0.15	5.60 ± 0.15	8.30min	4.50 ± 0.20	2.05 ± 0.10	10.70 ± 0.20	1
EPC13A	13.50 ± 0.25	6.60 ± 0.20	4.60 ± 0.15	5.60 ± 0.15	8.50min	4.50 ± 0.20	2.05 ± 0.10	11.00 ± 0.20	1
EPC17	17.50 ± 0.30	8.55 ± 0.20	6.00 ± 0.15	7.70 ± 0.15	12.0 ± 0.50	6.05 ± 0.20	2.80 ± 0.10	14.50 ± 0.30	1
EPC18	18.40 ± 0.30	13.20 ± 0.15	4.10 ± 0.15	9.10 ± 0.15	13.10min	10.30 ± 0.15	2.65 ± 0.10	—	1
EPC19	19.10 ± 0.40	9.75 ± 0.20	6.00 ± 0.15	8.50 ± 0.15	13.10min	7.25 ^{+0.20} / _{-0.10}	2.50 ± 0.10	15.80min	1
EPC19A	19.60 ± 0.50	9.75 ± 0.20	6.00 ± 0.20	8.20 ± 0.20	13.60 ± 0.50	7.25 ± 0.20	2.40 ± 0.15	16.40 ± 0.50	1
EPC19.6	19.60 ± 0.40	12.34 ± 0.25	4.12 ± 0.10	10.02 ± 0.15	14.50 ± 0.35	9.25 ± 0.20	2.03 ± 0.10	15.75 ± 0.35	2
EPC19.6/30	19.60 ± 0.40	15.30 ± 0.25	4.12 ± 0.10	10.02 ± 0.15	14.50 ± 0.35	12.25 ± 0.20	2.03 ± 0.10	15.75 ± 0.35	2
EPC25	25.40 ± 0.50	12.50 ± 0.25	8.00 ± 0.25	10.50 ± 0.25	18.35 ± 0.40	9.00 ± 0.20	4.00 ± 0.20	21.05 ± 0.40	1



EFFECTIVE PARAMETERS

CORES	EFFECTIVE PARAMETERS				
	$C_i(\text{mm}^{-1})$	$L_e(\text{mm})$	$A_e(\text{mm}^2)$	$V_e(\text{mm}^3)$	Wt(g/set)
EPC10	2.03	19.28	8.36	161.23	0.92
EPC12.6	1.56	22.51	14.42	324.59	1.44
EPC13	2.46	30.60	12.50	382.00	2.08
EPC13A	2.55	31.08	12.18	378.55	2.12
EPC17	1.78	40.20	22.80	917.00	4.62
EPC18	2.49	55.11	22.09	1217.38	6.36
EPC19	2.03	46.10	22.70	1047.00	5.20
EPC19A	1.88	43.30	23.00	995.90	5.38
EPC19.6	2.95	52.33	17.70	926.24	5.42
EPC19.6/30	2.20	48.10	21.87	1051.95	6.70
EPC25	0.97	52.73	54.37	2866.93	12.16

ELECTRICAL CHARACTERISTICS

CORES	AL ± 25% (nH/N ²)						AL ± 30% (nH/N ²)	
	P4	P41	P5	N4	A05	A07	A10(L)	A121
EPC10	1000							
EPC12.6	1000		800					
EPC13	910		770					
EPC13A	910		770					
EPC17	1360		1140					
EPC18	1000							
EPC19	940	910	780				3560	4130
EPC19A	1100		930					
EPC19.6	860							
EPC19.6/30	860							
EPC25	1550	1500	1290					

Remark:

1. AL Value Testing Condition : 10kHz, 50mV, 100Ts. If testing condition is different from ACME's, please specify upon request & ordering.
2. Gapped core is available, please specify upon request & ordering. ACME's standard gapped core set is a combination of one gapped core and one ungapped core. If gapping on both pcs to make a set is needed, please specify upon request & ordering.
3. L : Mirror Finished Lapping. Please specify upon request & ordering by adding "L" at the end of Core Size if you need.