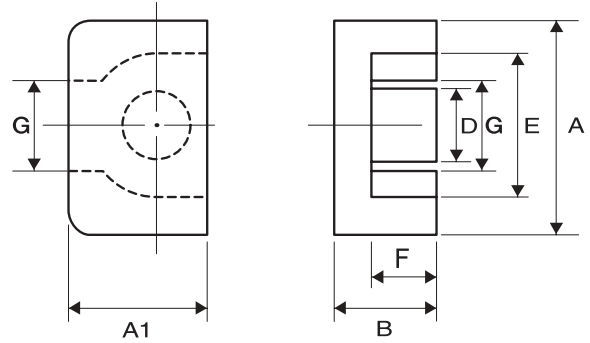
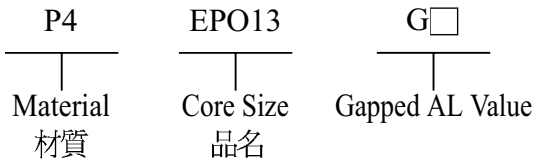


Type : EPO Cores

Ordering Code:

Shape:



DIMENSIONS

CORES	DIMENSIONS (mm)						
	A	B	A1	D	E	F	G
EPO13	12.50 ± 0.30	6.425 ± 0.075	7.20 ± 0.20	4.35 ± 0.15	10.00 ± 0.30	4.60 ± 0.10	5.90 ± 0.15

EFFECTIVE PARAMETERS

CORES	EFFECTIVE PARAMETERS				
	C _i (mm ⁻¹)	Le(mm)	A _e (mm ²)	Ve(mm ³)	Wt(g/set)
EPO13	1.340	25.80	19.30	497.94	3.08

ELECTRICAL CHARACTERISTICS

CORES	AL ± 25% (nH/N ²)*						AL ± 30% (nH/N ²)*				
	P4	P5	N2	N4	N42	A05	A05(L)	A10(L)	A101(L)	A12	A12(L)
EPO13			2100	1550				6700	6700	7700	

Remark:

1. AL Value Testing Condition : 10kHz, 50mV, 100Ts. If testing condition is different from ACME's, please specify upon request & ordering.
2. Gapped core is available, please specify upon request & ordering. ACME's standard gapped core set is a combination of one gapped core and one ungapped core. If gapping on both pcs to make a set is needed, please specify upon request & ordering.