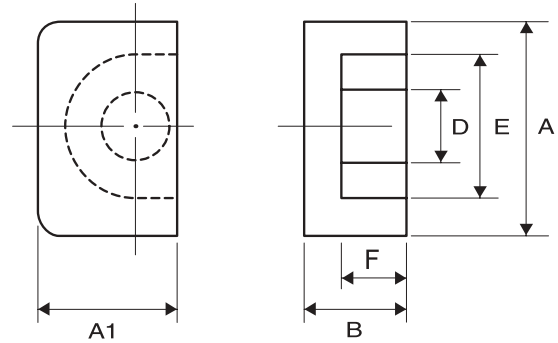
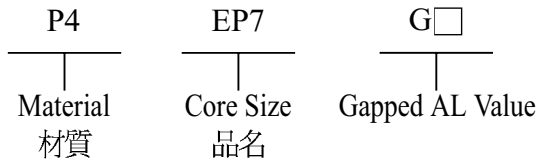


Type : EP Cores

Ordering Code:

Shape:



DIMENSIONS AND EFFECTIVE PARAMETERS

CORES	DIMENSIONS (mm)						EFFECTIVE PARAMETERS				
	A	A1	B	D	E	F	C _i (mm ⁻¹)	Le(mm)	Ae(mm ²)	Ve(mm ³)	Wt(g/set)
EP5	6.00 ± 0.15	3.80 ± 0.10	2.80 ± 0.05	1.70 ± 0.10	4.40 ± 0.15	2.00 ± 0.10	3.20	9.70	3.00	28.70	0.46
EP5-1	6.00 ± 0.15	3.80 ± 0.10	3.40 ± 0.05	1.70 ± 0.10	4.40 ± 0.15	2.60 ± 0.10	3.60	10.80	3.00	32.40	0.46
EP7	9.20 ± 0.20	6.35 ± 0.15	3.75 ^{+0.00} / _{-0.10}	3.30 ± 0.10	7.40 ± 0.20	2.60 ± 0.10	1.52	15.70	10.30	162.00	1.42
EP10	11.50 ± 0.30	7.65 ± 0.20	5.20 ^{+0.00} / _{-0.10}	3.30 ± 0.15	9.40 ± 0.20	3.70 ± 0.10	1.70	19.20	11.30	217.00	2.92
EP13	12.50 ± 0.30	8.80 ± 0.20	6.50 ^{+0.00} / _{-0.15}	4.35 ± 0.15	10.10 ± 0.20	4.60 ± 0.10	1.24	24.20	19.50	472.00	4.86
EP17	18.00 ± 0.40	11.00 ± 0.20	8.40 ± 0.20	5.68 ± 0.18	12.00 ± 0.40	5.65 ± 0.15	0.84	28.70	34.00	970.00	11.60

ELECTRICAL CHARACTERISTICS

CORES	AL + 30% - 20% (nH/N ²)						AL +40%-30% (nH/N ²)					
	P4	P5	N2	N4	N42	A05	A05(L)	A10(L)	A101(L)	A12	A12(L)	A15(L)
EP5	400				500			1900	1900	650	2050	
EP5-1				380	450							
EP7	1100	1000			1350	2000	3500	5200	5200	2100	3900min	4800min
EP10	1000	950				2000	3400	4800	4800	2150	3950min	
EP13	1600	1430 ± 25%	2200			2800	4400	7000	7000	3500	5800min	7000min
EP17	2500								11000			

Remark:

1. AL Value Testing Condition : 10kHz, 50mV, 100Ts. If testing condition is different from ACME's, please specify upon request & ordering.
2. Gapped core is available, please specify upon request & ordering. ACME's standard gapped core set is a combination of one gapped core and one ungapped core. If gapping on both pcs to make a set is needed, please specify upon request & ordering.
3. L : Mirror Finished Lapping. Please specify upon request & ordering by adding "L" at the end of Core Size if you need.