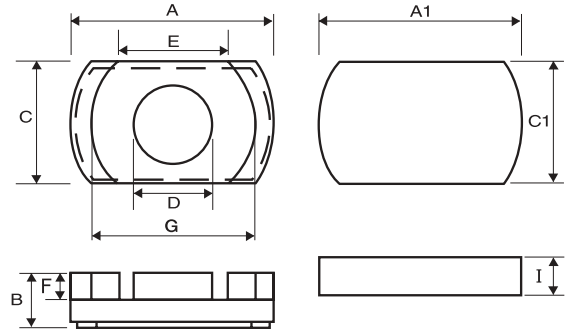
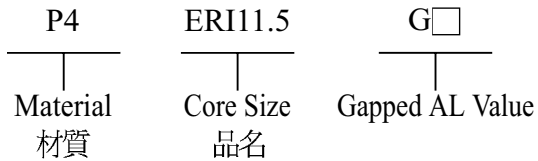


## Type : ERI Cores (1)

Ordering Code:

Shape:



### DIMENSIONS

CORES	DIMENSIONS (mm)									
	A	B	C	D	E	F	G	A1	C1	I
ERI11.5	11.50 ± 0.10	1.95 ± 0.08	7.80 ± 0.10	4.50 ± 0.05	6.60 ± 0.10	1.10 ± 0.05	9.50 ± 0.10	11.50 ± 0.10	7.80 ± 0.10	0.85 ± 0.05

### EFFECTIVE PARAMETERS

CORES	EFFECTIVE PARAMETERS				
	C <sub>i</sub> (mm <sup>-1</sup> )	Le(mm)	A <sub>e</sub> (mm <sup>2</sup> )	Ve(mm <sup>3</sup> )	Wt(g/set)
ERI11.5	0.66	12.76	19.11	243.84	0.81

### ELECTRICAL CHARACTERISTICS

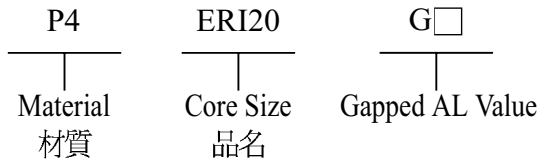
CORES	AL ± 25% (nH/N <sup>2</sup> )*							AL ± 30% (nH/N <sup>2</sup> )*	
	P4	P41	P5	P51	N4	A05	A07	A10(L)	A121(L)
ERI11.5	2000								

Remark:

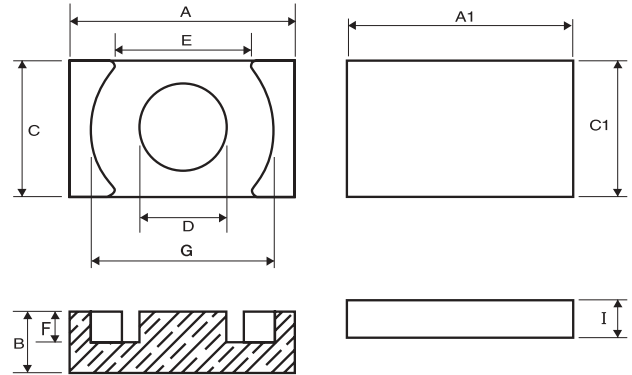
1. AL Value Testing Condition : 10kHz, 50mV, 100Ts. If testing condition is different from ACME's, please specify upon request & ordering.
2. Gapped core is available, please specify upon request & ordering. ACME's standard gapped core set is a combination of one gapped core and one ungapped core. If gapping on both pcs to make a set is needed, please specify upon request & ordering.

## Type : ERI Cores (2)

Ordering Code:



Shape:



## DIMENSIONS

CORES	DIMENSIONS (mm)									
	A	B	C	D	E	F	G	A1	C1	I
<b>ER13</b>	12.80 ± 0.20	2.85 ± 0.06	8.70 ± 0.20	5.00 ± 0.10	9.05 ± 0.15	1.75 ± 0.06	11.20 ± 0.20	—	—	—
<b>ERI13</b>	12.80 ± 0.20	2.85 ± 0.06	8.70 ± 0.20	5.00 ± 0.10	9.05 ± 0.15	1.75 ± 0.06	11.20 ± 0.20	12.80 ± 0.20	8.70 ± 0.20	1.10 ± 0.05
<b>ER18</b>	18.00 ± 0.35	3.15 ± 0.10	9.70 ± 0.20	6.20 ± 0.15	13.50min	1.60 ± 0.10	15.60 ± 0.30	—	—	—
<b>ERI20</b>	20.00 ± 0.30	5.70 ± 0.05	14.00 ± 0.30	8.80 ± 0.15	13.10 ± 0.25	3.50 ± 0.15	18.00 ± 0.30	20.00 ± 0.30	14.00 ± 0.30	2.20 ± 0.05
<b>ER23</b>	23.20 ± 0.45	3.60 ± 0.10	12.50 ± 0.25	8.00 ± 0.20	17.50min	1.60 ± 0.10	20.20 ± 0.40	—	—	—
<b>ER25</b>	25.00 ± 0.40	6.05 ± 0.05	18.00 ± 0.30	11.00 ± 0.20	14.50min	3.55 ± 0.15	22.00 ± 0.40	—	—	—
<b>ERI25</b>	25.00 ± 0.40	6.05 ± 0.05	18.00 ± 0.30	11.00 ± 0.20	14.50min	3.55 ± 0.15	22.00 ± 0.40	25.00 ± 0.40	18.00 ± 0.30	2.30 ± 0.05
<b>ER30/8</b>	30.00 ± 0.40	8.00 ± 0.15	20.00 ± 0.30	11.00 ± 0.20	19.45 ± 0.30	5.30 ± 0.20	26.00 ± 0.30	—	—	—



### EFFECTIVE PARAMETERS

CORES	EFFECTIVE PARAMETERS				
	C <sub>i</sub> (mm <sup>3</sup> )	Le(mm)	Ae(mm <sup>2</sup> )	Ve(mm <sup>3</sup> )	Wt(g/set)
ER13	0.91	18.10	19.90	360.00	1.86
ERI13	0.64	13.23	20.76	274.69	1.13
ER18	0.67	20.85	31.31	652.81	3.36
ERI20	0.40	23.80	59.80	1425.00	7.99
ER23	0.48	25.08	51.79	1298.89	6.94
ER25	0.31	31.84	103.60	3298.60	17.56
ERI25	0.29	26.40	89.70	2370.00	13.57
ER30/8	0.38	43.22	113.39	4900.00	28.00

### ELECTRICAL CHARACTERISTICS

CORES	AL ± 25% (nH/N <sup>2</sup> )							AL ± 30% (nH/N <sup>2</sup> )	
	P4	P41	P5	P51	N4	A05	A07	A10(L)	A121(L)
ER13	2000		1700	1400					
ERI13	2100								
ER18		2400							
ERI20	5000		3900						
ER23		3400							
ER25	5800								
ERI25	7000	6810	5600						
ER30/8	4300		3600						

Remark:

1. AL Value Testing Condition : 10kHz, 50mV, 100Ts. If testing condition is different from ACME's, please specify upon request & ordering.
2. Gapped core is available, please specify upon request & ordering. ACME's standard gapped core set is a combination of one gapped core and one ungapped core. If gapping on both pcs to make a set is needed, please specify upon request & ordering.