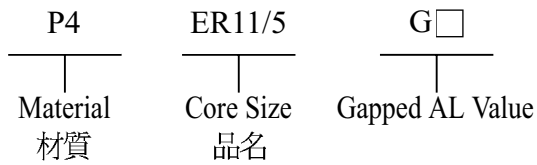


Type : ER Cores (1)

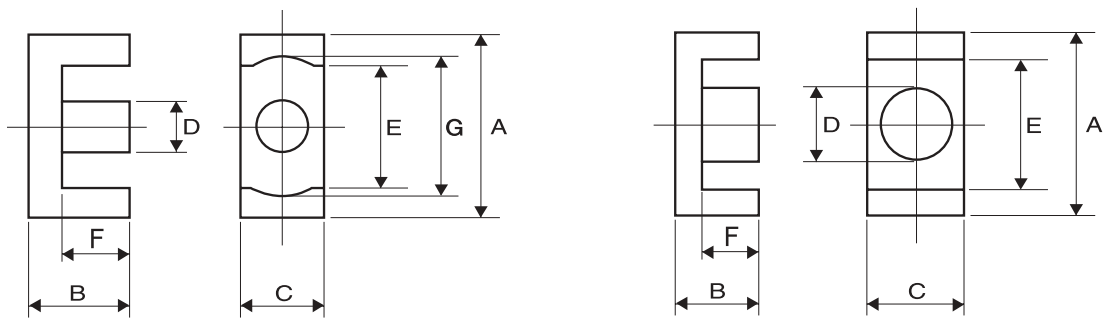
Ordering Code:



Shape:

Type:1

Type:2



DIMENSIONS

CORES	DIMENSIONS (mm)							Type
	A	B	C	D	E	F	G	
ER7.5/5	7.50 ± 0.15	2.50 ± 0.10	4.00 ± 0.10	2.60 ± 0.10	5.70 ± 0.10	1.75 ± 0.07	6.225 ± 0.125	1
ER9.5/5	9.35 ± 0.15	2.45 ± 0.05	4.90 ± 0.10	3.40 ± 0.10	7.00min	1.67 ± 0.07	7.40min	1
ER11/3.9	10.83 ± 0.175	1.93 ± 0.05	5.90 ± 0.10	4.125 ± 0.125	7.90min	1.055 ± 0.075	8.85 ± 0.15	1
ER11/5	10.83 ± 0.175	2.45 ± 0.05	5.90 ± 0.10	4.125 ± 0.125	7.90min	1.575 ± 0.075	8.85 ± 0.15	1
ER14.5/6	14.50 ± 0.20	2.95 ± 0.05	6.70 ± 0.10	4.70 ± 0.10	11.80 ± 0.20	1.60 ± 0.10	---	2
ER14.5/6.8	14.50 ± 0.20	3.40 ± 0.10	6.70 ± 0.10	4.70 ± 0.10	11.80 ± 0.20	2.10 ± 0.10	---	2



EFFECTIVE PARAMETERS

CORES	EFFECTIVE PARAMETERS				
	C _i (mm ⁻¹)	Le(mm)	Ae(mm ²)	Ve(mm ³)	Wt(g/set)
ER7.5/5	2.26	13.06	5.78	75.51	0.35
ER9.5/5	1.56	13.63	8.73	118.99	0.62
ER11/3.9	1.01	12.14	11.92	144.70	0.80
ER11/5	1.17	14.18	12.13	172.00	0.90
ER14.5/6	1.07	18.38	17.13	314.85	1.69
ER14.5/6.8	1.17	20.18	17.18	346.69	1.90

ELECTRICAL CHARACTERISTICS

CORES	AL ± 25% (nH/N ²)							AL ± 30% (nH/N ²)		
	P4	P41	P5	P51	N4	A05	A07	A10(L)	A121(L)	A15
ER7.5/5	710		630							
ER9.5/5	950	930	880			1250	1580	3600	3200min	3200min
ER11/3.9	1040min									
ER11/5	1400		1120			2100	2380	6400		
ER14.5/6	1700	1600	1360	1210		2200	2600	6600	8000	6000min
ER14.5/6.8	1300									

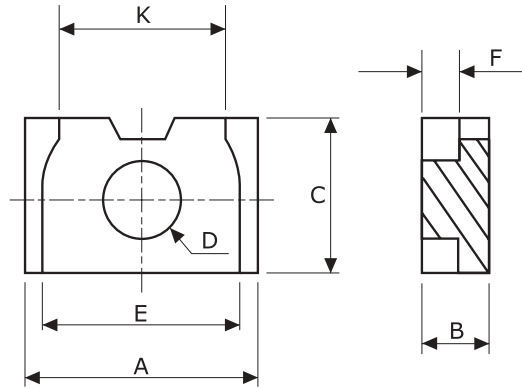
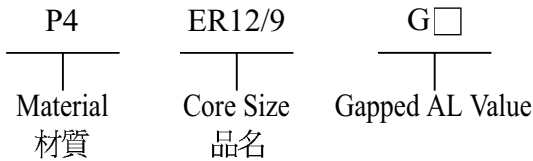
Remark:

1. AL Value Testing Condition : 10kHz, 50mV, 100Ts. If testing condition is different from ACME's, please specify upon request & ordering.
2. Gapped core is available, please specify upon request & ordering. ACME's standard gapped core set is a combination of one gapped core and one ungapped core. If gapping on both pcs to make a set is needed, please specify upon request & ordering.
3. L : Mirror Finished Lapping. Please specify upon request & ordering by adding "L" at the end of Core Size if you need.

Type : ER Cores (2)

Ordering Code:

Shape:



DIMENSIONS

CORES	DIMENSIONS (mm)						
	A	B	C	D	E	F	K
ER10/4.3	9.90 ± 0.15	2.15 ± 0.10	7.80 ^{+0.10} / _{-0.125}	3.70 ± 0.10	8.10 ^{+0.15} / _{-0.10}	1.10 ± 0.075	6.50 ± 0.15
ER12/9/5	12.20 ± 0.20	2.50 ± 0.08	9.00 ± 0.125	5.55 ± 0.10	10.0 ± 0.15	1.00 ± 0.08	8.60 ± 0.15
ER12/9/5.7	12.20 ± 0.20	2.87 ± 0.06	9.00 ± 0.15	5.55 ± 0.10	10.0 ± 0.20	1.37 ± 0.06	8.60 ± 0.15
ER12/9/8	12.20 ± 0.20	4.00 ± 0.06	9.00 ± 0.15	5.55 ± 0.10	10.0 ± 0.15	2.50 ± 0.06	8.60 ± 0.15

EFFECTIVE PARAMETERS

CORES	EFFECTIVE PARAMETERS				
	C _i (mm ⁻¹)	L _e (mm)	A _e (mm ²)	V _e (mm ³)	Wt(g/set)
ER10/4.3	0.75	11.51	15.20	174.95	1.16
ER12/9/5	0.50	13.39	26.72	357.78	2.34
ER12/9/5.7	0.56	14.87	26.46	393.46	2.52
ER12/9/8	0.74	19.36	25.95	502.39	2.64

ELECTRICAL CHARACTERISTICS

CORES	AL ± 25% (nH/N ²)							AL ± 30% (nH/N ²)	
	P4	P41	P5	P51	N4	A05	A07	A10(L)	A121(L)
ER10/4.3	1750		1560						
ER12/9/5	3330		2650						
ER12/9/5.7	3100		2400						
ER12/9/8	2350		1880						

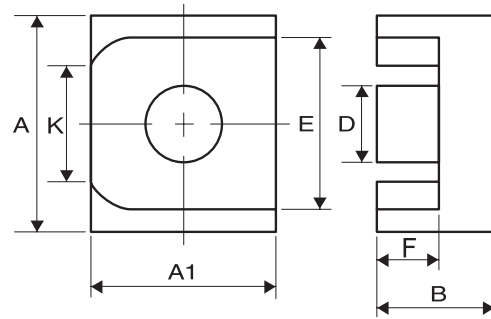
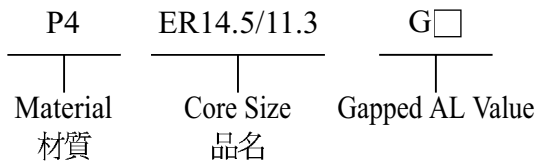
Remark:

1. AL Value Testing Condition : 10kHz, 50mV, 100Ts. If testing condition is different from ACME's, please specify upon request & ordering.
2. Gapped core is available, please specify upon request & ordering. ACME's standard gapped core set is a combination of one gapped core and one ungapped core. If gapping on both pcs to make a set is needed, please specify upon request & ordering.

Type : ER Cores (3)

Ordering Code:

Shape:



■ DIMENSIONS

CORES	DIMENSIONS (mm)						
	A	A1	B	D	E	F	K
ER14.5/11.3	14.50 ± 0.20	11.30 ± 0.20	4.10 ± 0.10	6.00 ± 0.12	12.20 ± 0.15	2.90 ± 0.10	8.30 ± 0.15

■ EFFECTIVE PARAMETERS

CORES	EFFECTIVE PARAMETERS				
	C _i (mm ⁻¹)	L _e (mm)	A _e (mm ²)	V _e (mm ³)	Wt(g/set)
ER14.5/11.3	0.70	20.12	28.53	574.02	3.46

■ ELECTRICAL CHARACTERISTICS

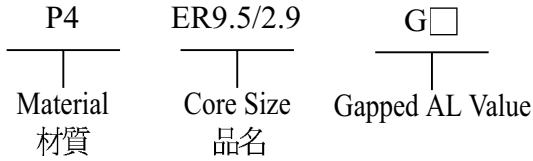
CORES	AL ± 25% (nH/N ²)*							AL ± 30% (nH/N ²)*	
	P4	P41	P5	P51	N4	A05	A07	A10(L)	A121(L)
ER14.5/11.3	2500								

Remark:

1. AL Value Testing Condition : 10kHz, 50mV, 100Ts. If testing condition is different from ACME's, please specify upon request & ordering.
2. Gapped core is available, please specify upon request & ordering. ACME's standard gapped core set is a combination of one gapped core and one ungapped core. If gapping on both pcs to make a set is needed, please specify upon request & ordering.

Type : ER Cores (4)

Ordering Code:

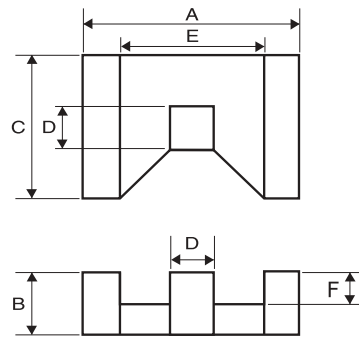
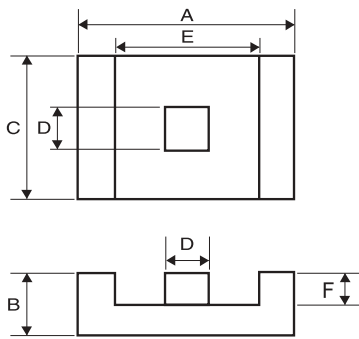


* ER9.5/2.9 = ER9.5/2.9A + ER9.5/2.9B

Shape:

ER9.5/2.9A

ER9.5/2.9B



DIMENSIONS

CORES	DIMENSIONS (mm)					
	A	B	C	D	E	F
ER9.5/2.9	9.50 ± 0.15	1.47 ± 0.05	6.00 ± 0.15	2.95 ± 0.05	7.50 ± 0.15	0.87 ± 0.05

EFFECTIVE PARAMETERS

CORES	EFFECTIVE PARAMETERS				
	C _i (mm ³)	Le(mm)	Ae(mm ²)	Ve(mm ³)	Wt(g/set)
ER9.5/2.9	0.94	7.51	7.98	59.92	0.47

ELECTRICAL CHARACTERISTICS

CORES	AL ± 25% (nH/N ²)							AL ± 30% (nH/N ²)	
	P4	P41	P5	P51	N4	A05	A07	A10(L)	A121(L)
ER9.5/2.9	1250								

Remark:

1. AL Value Testing Condition : 10kHz, 50mV, 100Ts. If testing condition is different from ACME's, please specify upon request & ordering.
2. Gapped core is available, please specify upon request & ordering. ACME's standard gapped core set is a combination of one gapped core and one ungapped core. If gapping on both pcs to make a set is needed, please specify upon request & ordering.