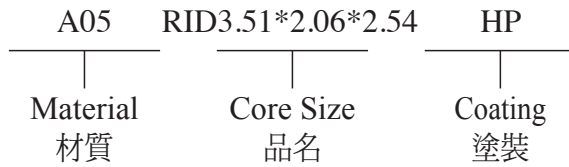


Type : RID Cores

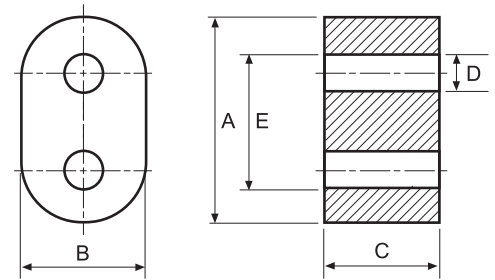
Ordering Code:



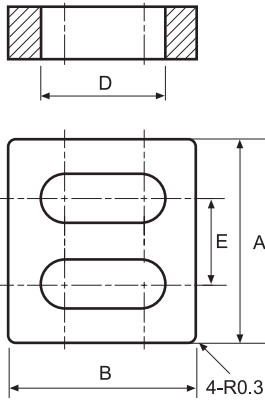
C : Epoxy Coating of Halogen-Free HUC : Epoxy Coating of UL & Halogen-Free
 HP : Parylene Coating of Halogen-Free

Shape:

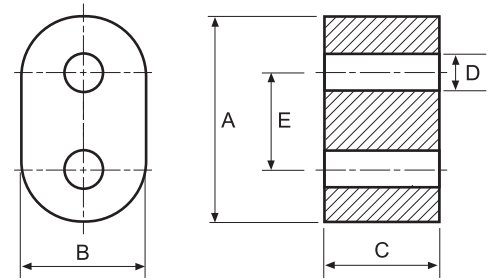
Type:1



Type:2



Type:3



■ DIMENSIONS

CORES	DIMENSIONS (mm)						Type
	A	B	C	D	D1	E	
RID2.5x2.1x1.0	2.50 ± 0.15	2.10 ± 0.15	1.00 ± 0.15	1.00 ± 0.15	0.55 ± 0.15	1.20 ± 0.15	2
RID3.45x2.01x2.4	3.45 ± 0.15	2.01 ± 0.15	2.40 ± 0.15	0.86 ± 0.10	—	2.31 ± 0.10	1
RID3.5x2x2HP	3.50 ± 0.15	2.00 ± 0.15	2.00 ± 0.15	0.90 ± 0.10	—	1.78 (ref)	3
RID3.51x2.06x2.54	3.51 ± 0.15	2.06 ± 0.15	2.54 ± 0.15	0.86 ± 0.10	—	2.34 ± 0.10	1
RID3.6x2.1x1.8	3.60 ± 0.25	2.10 ± 0.20	1.80 ± 0.15	0.80 ± 0.15	—	2.33 ± 0.25	1
RID3.6Ax2x1.8	3.60 ± 0.25	2.00 ± 0.20	1.80 ± 0.20	0.86 ± 0.15	—	2.37 ± 0.22	1
RID3.66x2.36x2.36	3.66 ± 0.20	2.36 ± 0.20	2.36 ± 0.15	1.12 ± 0.10	—	2.50 ± 0.20	1
RID5x3x3	5.00 ± 0.30	3.00 ± 0.20	3.00 ± 0.30	1.20 ± 0.20	—	3.20 ± 0.20	1
RID6.9x4.06x6.35	6.90 ± 0.30	4.06 ± 0.25	6.35 ± 0.38	1.85 ± 0.15	—	2.92 (ref)	3
RID13.3x7.5x14.35	13.30 ± 0.50	7.50 ± 0.25	14.35 ± 0.40	3.80 ± 0.20	—	9.50 ± 0.20	1
RID19.45x9.5x12.7	19.45 ± 0.50	9.50 ± 0.25	12.70 ± 0.45	4.75 ± 0.20	—	9.90 ± 0.25	3